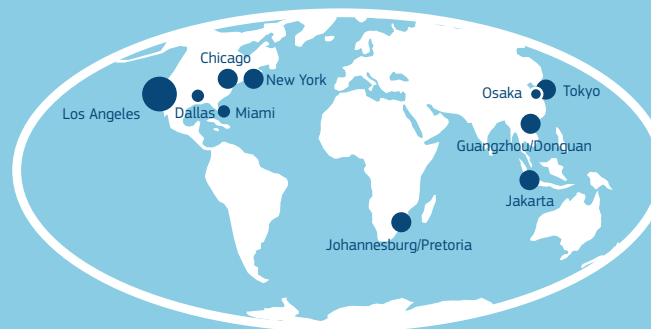
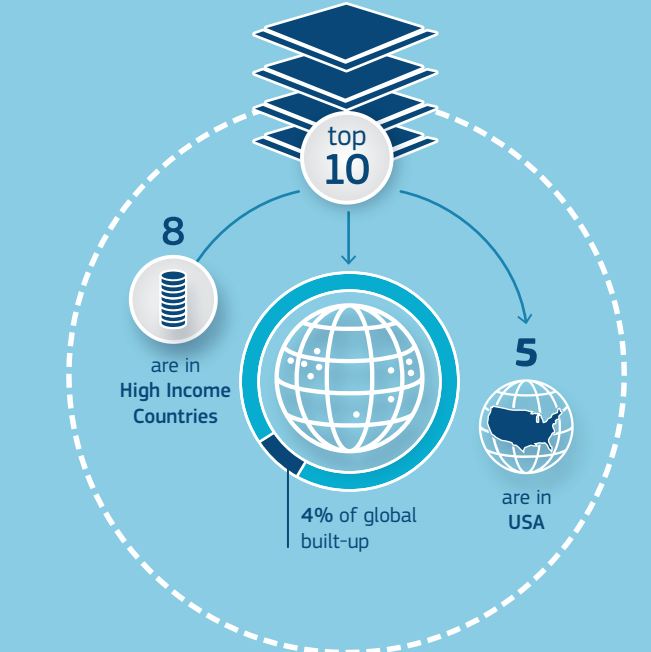
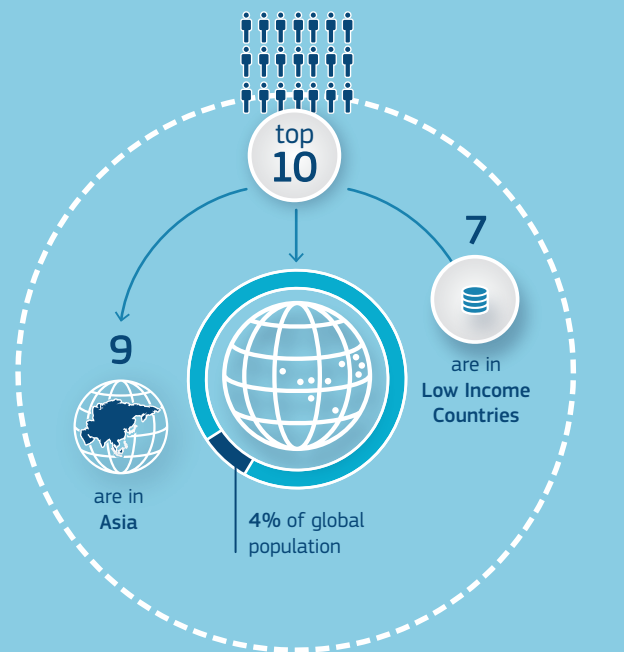


Urban Centres

(High Density Clusters with more than 50k inhabitants)

The 10 most populated urban centres

The 10 urban centres with the biggest built-up area



Population in million of inhabitants (2015)

- 40 - 50 million
- 30 - 40 million
- 20 - 30 million

Built-up in sqKm (2015)

- 4.000 - 5.000
- 3.000 - 4.000
- 2.000 - 3.000

	Population
1 Guangzhou/Donguan	46,038,426
2 Cairo	37,839,851
3 Jakarta	36,398,769
4 Tokyo	33,744,544
5 New Delhi	27,634,561
6 Kolkata	26,865,342
7 Dhaka	24,833,278
8 Shanghai	24,669,234
9 Mumbai	23,413,134
10 Manila	22,448,173

	Built-up (sqKm)
1 Los Angeles	4,734
2 Tokyo	3,874
3 Jakarta	3,867
4 Guangzhou/Donguan	3,666
5 New York	3,540
6 Chicago	3,523
7 Johannesburg/Pretoria	3,170
8 Dallas	2,469
9 Miami	2,427
10 Osaka	2,357

Data sources: GHSL Built-Up, European Commission (2016), GPWv4, CIESIN - Columbia University (2016), Gadm v2.8 (November 2015)
Disclaimer: Cairo includes the Nile Delta

Settlement model based on: A harmonised definition of cities and rural areas: the new degree of urbanisation, L. Dijkstra & H. Poelman, European Commission (2014)

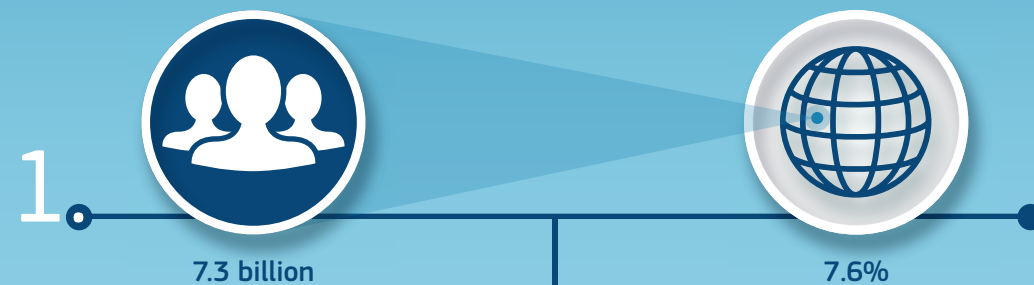


Mapping human presence on Earth

The Global Human Settlements Layer (GHSL)

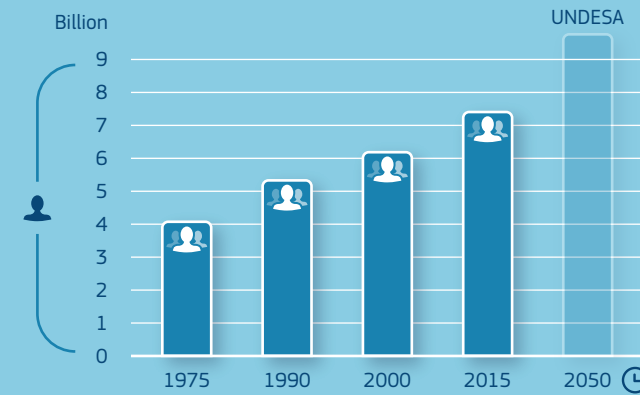
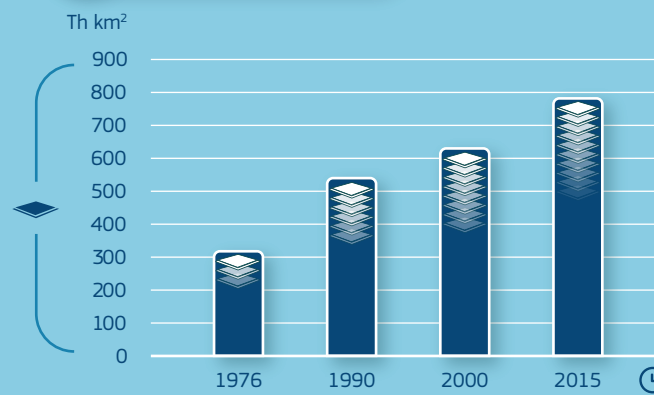
Key messages from the Human Planet Atlas

Today 7.3 billion people live and work in only 7.6% of the global land mass



Built-up area

Population

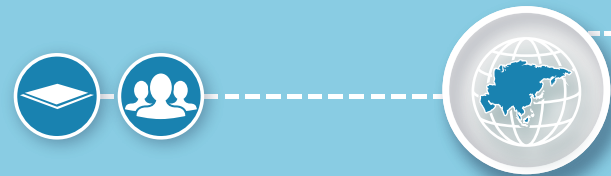
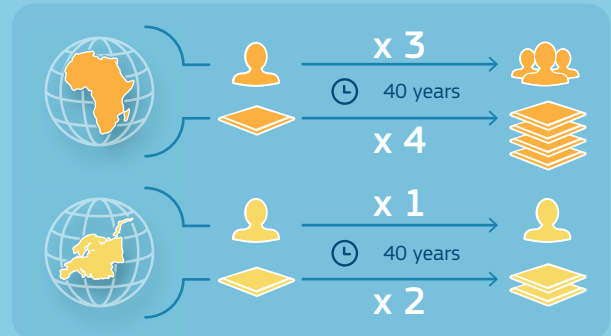


In the last 40 years built-up area increased by approximately 2.5 times

In the last 40 years population increased by 1.8 times

2

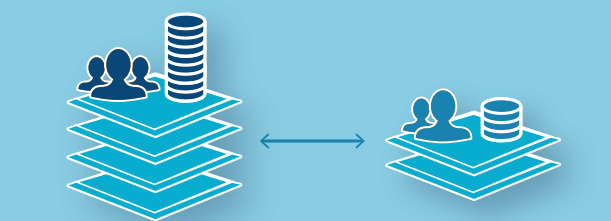
The dynamic of population and built-up increase have **very strong regional differences**



Asia is by far the most populated continent and has since the year 2000 also the biggest amount of built-up areas

3

Great inequalities between rich and poor in built-up space per capita



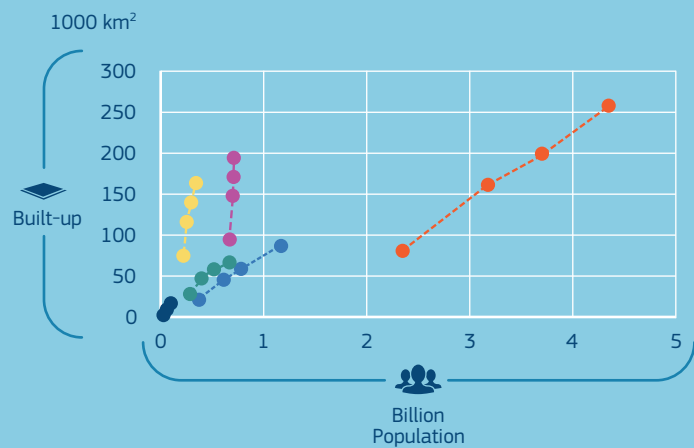
The High Income Countries (HIC) have increased the available built-up area per capita. The built-up area per capita in Low-Middle Income Countries (LMC) and Low Income Countries (LIC) is only less than one quarter of that of HIC

180,5
HIC

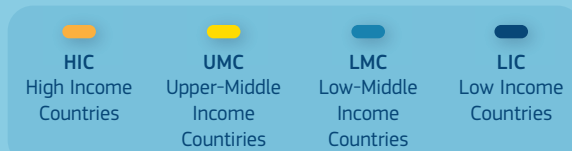
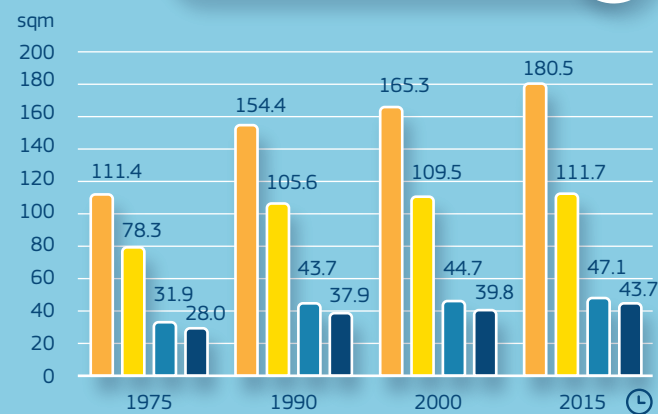
43,7
LIC

Square metres per inhabitant

Growth of population and built-up



Built-up area per capita in different income groups

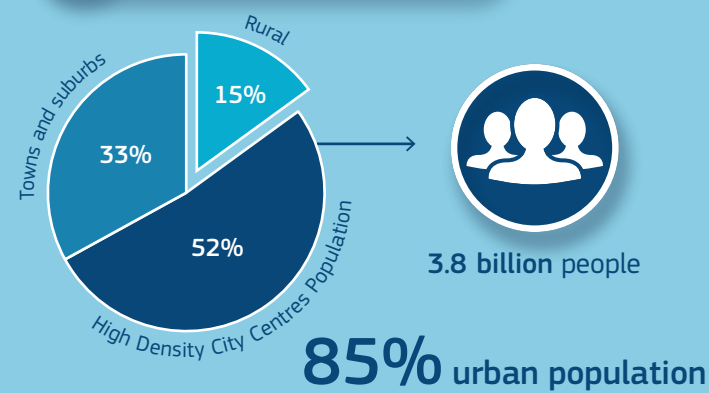


4

We are much more **urbanised** than what we think

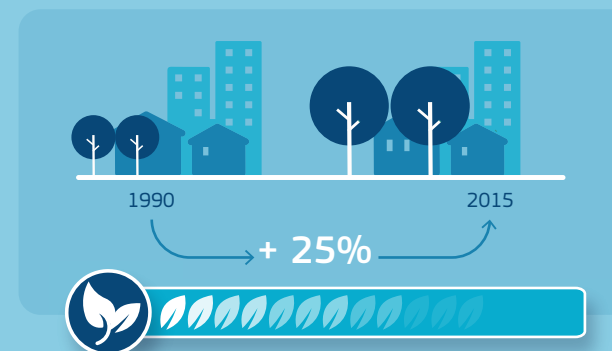


Urbanisation in 2015



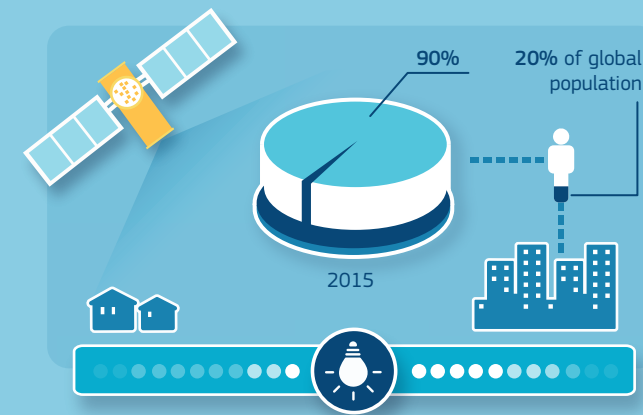
6

Globally, city centres are becoming **greener**



5

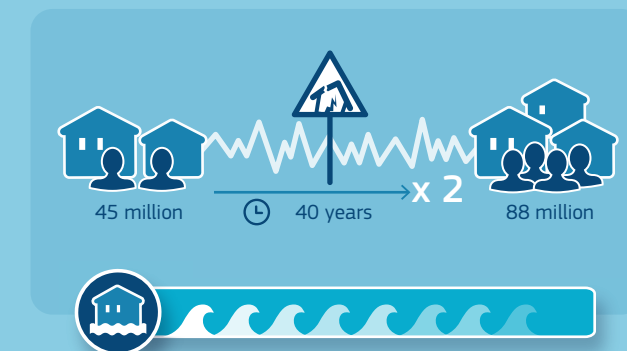
Access to energy is still very unequal



In 2015, 90% of the night light observed from space was emitted from urban areas that host only 20% of the global population

7

Global exposure to **disasters** has increased



GHSL

The most complete and consistent, global, free and open dataset on human settlements – from the village to the megacity



<http://ghsl.jrc.ec.europa.eu>

